

YERBA



BY FEDERICO GARCÍA LORCA

Presented
by



NOVEMBER 11 - 27, 2010



**Industrial Alliance Pacific
is proud to support
the University of Victoria's
Phoenix Theatre**

Insurance and financial
services are our strengths.

Serving communities
is our passion.



A partner you can trust.

www.iapacific.com

Industrial Alliance Pacific
Insurance and Financial Services Inc.
2165 Broadway West, PO Box 5900
Vancouver, BC V6B 5H6
Telephone: 604 734-1667



© Trademark of Industrial Alliance Insurance and Financial Services Inc., used
under license by Industrial Alliance Pacific Insurance and Financial Services Inc.

SRM154-115

Yerma

by Federico García Lorca*

CREATIVE TEAM

Director	Warwick Dobson
Set Designer	Allan Stichbury
Costume Design	Mary Kerr and Patricia Reilly
Lighting Designer	Eduardo Mier
Movement Director	Conrad Alexandrowicz
Choreographer	Veronica Maguire
Dramaturge	Kate Bessey
Music Director and Composer	Jeffrey Pufahl
Stage Manager	Chiara Guizzo
Vocal & Acting Coach	Linda Hardy
Assistant Directors	Kate Bessey and Jeffrey Pufahl
Assistant Set Designer	Jessica P. Wong
Assistant Costume Designers	Nicole Bobick and Michelle Lo
Projections	Cameron Fraser

CAST

Carol Adamson	Laundress
Mik Byskov	Villager
Dannielle Currie	Neighbour
Geneviève Dale	Young Girl
Hayley Feigs	Pagan Woman
Alysson Hall	Neighbour, Laundress
Kesine Haney	Yerma
Alberta Holden	Young Girl
Sarah Johnson	Laundress
Sarah Koury	Maria
Angie Lopez	Angel, Sister-in-Law
Jonathan Mason	Villager
Azalea Micketti	Dolores
Graham Miles	Villager
Graeme Nathan	Juan
Gareth Owen	Guitarist
Kale Penny	Villager, Male Mask
Véronique Piercy	Laundress
Alex Plouffe	Victor
Sarah Sabo	Villager, Female Mask
Kayla Sankey	Laundress
Christie Stewart	Angel, Sister-in-Law
Simon Walter	Soldier, Villager
Asia Wolfe	Laundress

There will be one 15-minute intermission during the performance.

Presented by Industrial Alliance Pacific Insurance and Financial Services Inc.
Season Community Partner: Cadboro Bay Village

*The version is loosely based on the John Edmunds translation of
Federico García Lorca: Four Major Plays (in the Oxford World Classics series).
Additional material by Kate Bessey, Warwick Dobson and William Weigler.

Director Notes



It is often said by literary critics that one of the most powerful underlying themes in the work of the Spanish playwright and poet, Federico García Lorca, is desire denied.

This theme is probably most powerfully present in *Yerma* (written in 1934), which tells the story of a married woman who is unable to conceive the child she longs for. But Lorca was also a passionate republican who saw, in the 1931 victory of Manuel Azana's government, the hope of a bright new future for his country under the Second Spanish Republic. Following an attempted coup by a group of Spanish army generals under the leadership of General Francisco

Franco, these hopes were dashed; and Lorca was murdered by Franco's fascists in the first weeks of the ensuing Spanish Civil War.

I first directed *Yerma* in a student production at Northumbria University (UK) in 1999. In the end, I was unable to foreground the political dimension of the play sufficiently; this represents a second attempt to present both the personal and the political intentions that, I believe, animate Lorca's work.

I had watched two films (*Land and Freedom* and *Liberterias*) which powerfully depicted the part played by republican women in the early days of the civil war. The women's intensely passionate desire to see a new Spain, once the forces of fascism had been defeated, seemed to mirror Lorca's desire. It became clear to me that *Yerma* was a powerful political play, as well as a tragic poem for a barren wife.

Yerma's longing for a child reflects the hopes of the republican women for the future of Spain. It is often said that children represent hope for the future, and I began to see *Yerma's* unborn child as a symbol of the spark of revolution that was extinguished by the fascist victory in 1939.

The collaboration between the Church and Franco's forces is well documented in the histories of the period. Two worlds collide in *Yerma*. On the one hand, we see the suffocating world of *Yerma's* village, dominated by the reactionary forces of Church, convention and tradition; and on the other, we see the earthy, natural world of the pagan woman and her free-spirited, liberated outlook, unfettered by the bonds of custom. It is this collision between the clashing forces of reaction and revolution that lies at the heart of the play.

Warwick Dobson

Nestled in the Cowichan Valley

Discover...

Honeymoon Bay
Lodge and
Retreat

A not-for-profit Health & Wellness Centre

Artists/Artisans Exhibition & Sale

Thursday & Friday Nov. 18 & 19th • 6-8pm
Saturday Nov. 20 • 11am - 6pm

Painters, Photographers, Sculptors, Authors

Enjoy lunch and dinner in the Copper Creek Diningroom

**Book early for your Christmas event and
receive 20% off overnight stay.**



888.749.4252 • 250.749.4252 • www.honeymoonbayretreat.com

Creative Team



Warwick Dobson *Director*

Warwick Dobson was the director of Education and Community Outreach at *The Duke's Theatre* in Lancaster (UK). He also worked as an elementary school teacher, drama consultant, teacher educator and university lecturer. Before coming to Canada, he worked primarily in the UK, but also in the US, the Czech Republic, Norway and Finland. As well as being Chair of the Department of Theatre at UVic, he is also a University Scholar in Applied Theatre. He is the author of a number of books on drama education and theatre studies; and he is also a regular contributor to drama publications in the UK, Canada and Australia.



Allan Stichbury *Set Designer*

Allan is a member of The Associated Designers of Canada. His recent productions include set designs for: *Miracle Worker* and *The Wars* at the Vancouver Playhouse; *The Rake's Progress* at Pacific Opera Victoria; *One Flew Over the Cuckoo's Nest* at Theatre Calgary and The Manitoba Theatre Centre; *Mail Order Bride* at The Blyth Festival and set and lighting design for *Communion* and *The Last Dog of War* at Alberta Theatre Projects. Upcoming projects include set design for *Barber of Seville* at the Vancouver Opera and *Flying Dutchman* at Pacific Opera Victoria. Currently his production of *Hanuman the Mighty* is performing at the Royal Theatre in Bangkok.



Mary Kerr *Co-Costume Designer*

Mary Kerr is a design professor at UVic and has production designed for such companies as the Paris Opera, Canadian Opera Company, National Ballet of Canada, Stratford and Shaw Festivals, the Opening and Closing Ceremonies of the Commonwealth Games and the PBS series *The Toy Castle*. She represents Canada at such international competitions as World Stage and the Prague Quadrennial. Current work: *Sweeney Todd* at the Citadel Theatre in Edmonton and a new musical drama in Philadelphia. Mary was elected a Fellow of the Royal Society of Canada this fall and is Canadian Research Editor for *World Scenography* Vol. 1.



Patricia Reilly *Co-Costume Designer*

Patricia is a fourth year theatre student at UVic specializing in design. In 2008, she graduated from Red Deer College's Technical Theatre Program. Previously Patricia has worked as a sound designer, properties master and house technician in various productions in Red Deer and Edmonton. This past summer, Patricia designed costumes for both *Loot!* and *Hank Williams – The Show He Never Gave* for Blue Bridge Repertory Theatre.



Eduardo Mier *Lighting Designer*

Eduardo Mier holds a degree in set design from the Escuela Nacional de Arte Teatral del Instituto Nacional de Bellas Artes. He finished his masters degree in scenic arts at the Universidad Veracruzana. He is a specialist designer for theatre and modern dance and has designed scenery and lighting for works by some of the major choreographers and theatrical directors in Mexico. This spring he collaborated with Ten-Ten Theatre in New York City. In 1994, he received the grant for "Jóvenes Creadores" of the Fondo Nacional para la Cultura y las Artes. He is currently a professor at the School of Theatre at the Universidad Veracruzana.

Creative Team



Jeffrey Pufahl *Music Director, Composer and Assistant Director*

Jeffrey is pleased to join the directing team at UVic and is in the MFA directing program. He has worked professionally as an actor, singer, director, music director and producer across Canada. He has produced two shows for Victoria audiences through the Fringe Festival: his smash hit *Caberlesque!* and Pau Miro's *It's Raining in Barcelona*.



Kate Bessey *Dramaturge and Assistant Director*

Kate Bessey is working on her MA in applied theatre at UVic. Originally from the United States, she has recently arrived in Victoria with her husband and son after a decade in Cordoba, Argentina where she coordinated drama in education programs and worked with local, independent theatre groups devising original material.



Veronica Maguire *Choreographer*

Co-founder and artistic director of Alma de España Flamenco Dance Company & School, Veronica has collaborated as guest artist with the Victoria Symphony as well as producing, staging and performing in many major concerts throughout Western Canada. She appears on CD's "Alma de España's FLAMENCO LIVE", "Gareth Owen Flamenco Guitar" & "EL Cobre".



Conrad Alexandrowicz *Movement Director*

Conrad is a director, writer and choreographer, and the artistic director of Wild Excursions Performance. He is a storyteller who frequently combines elements of theatre and dance in different ways. To date he has created over forty-five dance and physical-theatre works, which have been presented across Canada, in New York City, France and the U.K. He holds a BFA in dance from York University and an MFA in directing from the University of Alberta. Upcoming projects include directing a play for actors and tap dancers at the Lorraine Kimsa Theatre for Young People in Toronto and the National Arts Centre in Ottawa.



Chiara Guizzo *Stage Manager*

Chiara began her theatrical career as a 5-year-old model in a small town multicultural festival. She progressed through various forms of performance before being introduced to technical theatre. Now a Production and Management Specialist in her 4th year at the University of Victoria, her experience at the Phoenix includes: Stagehand for *Wind in the Willows* (2007) and SATCo.'s *Alice: 10 Years Later* (2008); Lighting Board Operator for SATCo's *Z-Day* (2009); Assistant Stage Manager for *La Ronde* (2009); and most recently, Senior Assistant Stage Manager for *Wreckage* (2010).

VICTORIA *Arts*
M A R K E T I N G

Programme Advertising, Design and Production

(250) 382-6188 • Publishers: **Philomena Hanson/Paul Hanson** • Design/Production: **Lyn Quan**

E: vicarts@vicarts.com

www.vicarts.com

ROYAL LEPAGE

Coast Capital Realty
INDEPENDENTLY OWNED AND OPERATED



Tom
CROFT

PERSONAL REAL ESTATE
CORPORATION

250 592.4422

1933 Oak Bay Ave
Victoria, BC
V8R 1C8



tomcroft@royallepage.ca

WWW.CROFTREALTYGROUP.COM

**Olé
Olé
Phoenix
Theatre**

Hillside Printing
Communicating through print
3050 Nanaimo Street, Victoria, BC
Ph: (250) 386-5542 • Fx: (250) 386-7838
sales@hillsideprinting.com
www.hillsideprinting.com

P R E S T I G E
PICTURE FRAMING ETCETERA

OVER 30 YEARS IN VICTORIA
AT 2002 OAK BAY AVENUE • 250-592-7115

Enhance and upgrade your present or newly found art work
to current conservation standards and design concepts.



Alma de España Flamenco Dance Company
presents
“Recuerdos”

**20th Anniversary Celebration
of Flamenco In Victoria!**

**Sat., July 9, 2011
Royal Theatre**

Tickets now on sale at McPherson Box Office



Also New CD
**Gareth Owen
“El Cobre”**
on sale now!

Cast



Carol Adamson *Laundress*

A third year student in the acting specialization, Carol's performance credits include: *The Unusual Case of Mr. Morton*, *T.B.Eh!?*, *This is a Play*, *Geez*, *Moons of Jupiter* and *Savage*. She has also worked behind the scenes on Phoenix mainstage productions but is excited to be a part of the *Yerma* cast.



Mik Byskov *Villager*

Mik is in his third year of the department's acting specialization program. He's been having a blast working on *Yerma* and is looking forward to acting in *Twelfth Night* in the new year. Previous credits at the Phoenix include *The Moons of Jupiter* and SATCo's *Our Cannibal Fathers* and *T.B. eh!?*



Dannielle Currie *Neighbour*

Dannielle Currie is a third year student in the applied theatre program. Her future ambition is to become a high school drama teacher and is very excited to be acting in her first Phoenix mainstage production.



Geneviève Dale *Young Girl*

A fourth year acting student, Geneviève is excited to work with such a great company. Previous credits include *Conversations with the Sea* (Impulse Theatre), *Smokin* (FIND Festival), *Romeo and Juliet*, *The Little Prince* (SATCo) and other projects. She works in radio, enjoys writing and occasionally attempts singing.



Hayley Feigs *Pagan Woman*

Yerma marks Hayley's second mainstage at the Phoenix. She is in her third year in the acting and applied theatre specializations. Previous Phoenix credits include: *Medea*, *The Unusual Case of Mr. Morton*, *Orangedale Whistle*, *Struvelapeter*, *Sick*, *Geez!*, as well as several third and fourth year directing scenes.



Alysso Hall *Neighbour, Laundress*

Alysso is pleased to be entering her third year at UVic in the acting specialization. Prior to *Yerma*, she has appeared in the SATCo production *Clockwork*, and the 2010 Studio Series production of *Orangedale Whistle*. She was also a part of the 2008 LEAP program at the Arts Club Theatre in Vancouver.



Kesinee Haney *Yerma*

Kesinee is a fourth year acting student and is ecstatic to be a part of the wonderful company of *Yerma*. Other Phoenix Theatre credits include *Romeo and Juliet* (Capulet Servant), *Medea* (Chorus/singer), and *Dark of the Moon* (Mrs. Bergen), and *Easter* (Diplomat) in the 2010 FIND Festival.



Alberta Holden *Young Girl*

Alberta is in the second year acting program at the Department of Theatre. She has also acted in student directing scenes, however *Yerma* is her first mainstage production.

Cast



Sarah Johnson *Laundress*

Sarah is a third year theatre student at the University of Victoria. Other theatre credits include SATCo and Bring Back Pluto's production of Geez!, the Phoenix's The Moons of Jupiter, and SATCo's The Circus Project. Yerma is her first mainstage and she is excited to be working with so many talented people.



Sarah Koury *Maria*

In her final year in the acting program, Sarah is very pleased to work with Warwick Dobson for the first time. This summer she made her Fringe debut in Dog Sees God (2010 Victoria International Fringe Festival). Previous Phoenix Theatre credits include Romeo and Juliet (2009) and Medea (2009).



Angie Lopez *Angel, Sister-in-Law*

Angie is an acting specialization student and is excited to make her mainstage acting debut. This summer Angie was seen in Atticdwellers at the Victoria Fringe Festival and is looking forward to working with Daniel MacIvor later this season in the world premier of Inside.



Jonathan Mason *Villager*

Jonathan is a third year acting student in the theatre program and Yerma is his second mainstage production. Other credits include Weckage (Phoenix), The Unusual Case of Mr. Morton and SATCo productions such as Z-Day, Savage, Geez!. Jonathan hopes to continue his education after UVic at Simon Fraser University.



Azalea Micketti *Dolores*

Azalea is a second year acting major. Last year you may have seen her in The Moons of Jupiter (Phoenix Theatre). She is thrilled to be a part of this adventure and hopes you enjoy the show!



Graham Miles *Villager*

Graham Miles is a third year student in the acting specialization at the Phoenix Theatre. He feels honoured to be working on his first mainstage production with the department. Recent credits include *The Moons of Jupiter*, SATCo's *Sick*, and *Father's Son*, a one-man show produced in the FIND Festival.



Graeme Nathan *Juan*

Graeme is a fourth year acting student in the department. Previous credits include: Cannibal in *Z-Day: The Anthem for the Post Zombie Apocalypse* (Bring Back Pluto Productions); Lucentio in *The Taming of the Shrew* (Victoria Shakespeare Society); Puck in *A Midsummer Night's Dream* (Langham Court Theatre); and Jerry in *Betrayal*, a UVic directed study.



Gareth Owen *Guitarist*

Gareth has earned acclaim in festivals and concerts throughout Canada including the 2008 Toronto International Flamenco Festival and at the 2009 Vancouver International Flamenco Festival. With already two albums recorded, Gareth draws on the inspiration from the *cante de Jerez*, which is the essential spirit and tradition of pure Flamenco.

Cast



Kale Penny *Villager, Male Mask*

Kale is a second year acting student at the department. Previous credits include *Geez!* (SATCo) and the 2010 Victoria Fringe Festival hit *Z-Day: The Anthem For The Post-Zombie Apocalypse* (Bring Back Pluto Productions). *Yerma* is his first mainstage production and he hopes you like this rendition of Lorca's classic!



Véronique Piercy *Laundress*

A second year acting student, Véronique is happy to be in her first Phoenix mainstage production. Past credits include: *Geez!* (Bring Back Pluto Productions), *Schoolhouse Rocks On* (Theatre SKAM), *Bike Ride* (Launchpad Productions/SKAM) and most recently, *Z-DAY* (BBPP), which won Pick of the Fringe in the Victoria Fringe Festival.



Alex Plouffe *Victor*

Alex is a fourth year acting student. Previous credits include: *A Streetcar Named Desire, As You Like It* (Blue Bridge Repertory Theatre), *Wreckage*, and *Romeo and Juliet* (Phoenix Theatres). He thanks Warwick for this fantastic experience and opportunity. Alex will also be appearing in the world premiere of *Inside* next March.



Sarah Sabo *Villager, Female Mask*

Sarah is currently in her second year in the Theatre program. In first year, she performed in two SATCo performances, *Z-Day* and *Geez!*, and was a dresser for *Romeo and Juliet*. *Yerma* is her first taste of performing with the department and she is extremely excited!



Kayla Sankey *Laundress*

Kayla is enjoying her final year in the acting specialization. Past Phoenix performances include *Wreckage, Romeo and Juliet, Santa Claus* (SATCo), *Sophie* (SATCo) and her portrayal of Emma in a studio production of Pinter's *Betrayal*. She will be playing Maria in the spring production of *Twelfth Night*.



Christie Stewart *Sister-in-Law, Angel*

A second year acting student, Christie is thrilled to make her mainstage debut. Previous credits include SATCo's *Struwwelpeter*, FIND's *My Aim is True*, MFA's *This Property is Condemned* and directing scenes from *Chicago, Of Mice and Men, Melville Boys, The Odd Couple*. She is excited to be a part of *Yerma!*



Simon Walter *Soldier, Villager*

Simon is a third year student in the UVic acting program and is thrilled to be involved with this fall's show. Recent productions include *The Moons of Jupiter* (Phoenix Theatre), *The Rocky Horror Show* and *Twelfth Night* (Project X Theatre, Kamloops).



Asia Wolfe *Laundress*

Asia has performed in many varied forms of theatre over the years, including Sarah Ruhl's *The Clean House, Once Upon a Mattress* and *Back to the 80s* with her high school musical theatre group. This is her first production with the Phoenix Theatre.

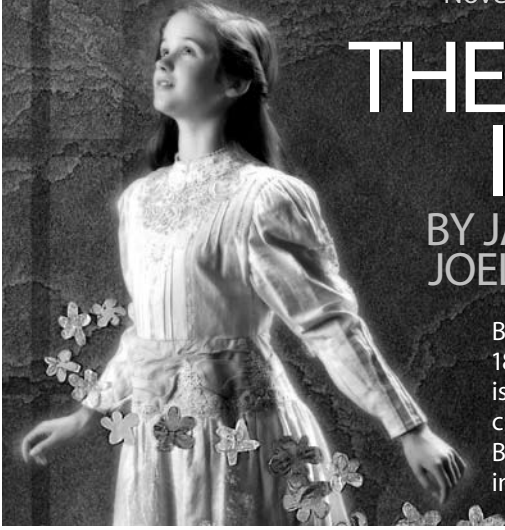
November 16 – December 19, 2010

THE LIFE INSIDE

World Premiere

BY JAMES FAGAN TAIT &
JOELYSA PANKANEA

Based on Maurice Maeterlinck's
1895 play, *Intérieur*, *The Life Inside*
is a unique piece of music theatre
created specifically for the
Belfry and the largest production
in our history.



Tickets 250-385-6815 FROM \$22-\$37 STUDENT DISCOUNTS AVAILABLE
1291 GLADSTONE AT FERNWOOD WWW.BELFRY.BC.CA

**Belfry
Theatre**

PHOTO OF ELIZABETH DUNCAN



The Canadian College of Performing Arts
presents

company c

**Join us for our
Final Fall
Performance**

**Shakespeare's
The Comedy of Errors**
Directed by Kate Twa

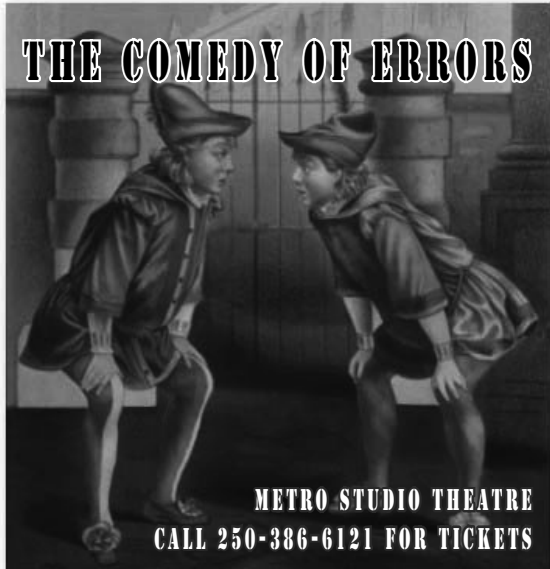
**On December 17-19
All's Well May Not End
Well!**

Friday 7:30pm,
Saturday 2 & 7:30pm,
Sunday 2pm

Call 250-595-9970
For Group Rates

COMING SOON!

THE COMEDY OF ERRORS



METRO STUDIO THEATRE

CALL 250-386-6121 FOR TICKETS



www.ccpacanada.com

Student *Production Team*

Additional Music

Leora Joy Godden

Production Assistant

Courtney Butler

Assistant Stage Manager (Props)

Sinead Hughes

Assistant Stage Manager (Costumes)

Molly Farmer

Assistant Technical Director

Amanda Verhagen

Lighting Board Operator

Robin Gadsby

Electrician

Kent Martin

Sound Operator

Alex Frankson

Production Audio Technician

Kale Penny

Child's Voice

Alexandra Bojanich

Scenic Carpenter

Brian Culp*

Set Dresser

Kimberly Normandeau

Props Coordinators

Nikki Bell, Jillian O'Quinn

Costume Cutter

Hazel Whitehead*

Coordinating Wardrobe Supervisor

Chelsea Bunyan

Wardrobe Supervisors

Kieran Wilson, Kat Jeffery

Assistant Wardrobe Supervisor

Emily Summers

Dressers

Cecilly Day, Julie Forrest, Caitlin Khran,

Allyson Leet, Sharmila Miller

Hair and Makeup Coordinator

Carly Mackay

Haircuts

Nancy Buchanan*

of David Levi Salon in Oak Bay

Marketing Assistant

Barb Hall

Assistant to the Audience Services Manager

Alina Cerminara

Front of House Managers

Montana Mills, Michelle Morris

Opening Night Reception

Tara Berntzen, Matthew Shewchuk,

Box Office Staff

Joey Baumgartel, Tara Berntzen,

Alina Cerminara, Kesinee Haney,

Mika Laulainan, Angie Lopez,

Maria Ng, Veronique Piercy,

Alex Plouffe, Christie Stewart

And Theatre 105, 205 and work study students.

* guest production artist

The Department of Theatre would like to thank the following for their support of this play:

Nancy Buchanan of David Levi Salon, Oak Bay

Dr. Marina Bettaglio and Jacqueline Santolalla

Department of *Theatre*

Dr. Warwick Dobson Chair (Applied Theatre)

Conrad Alexandrowicz (Movement)

Dr. Sarah Blackstone

Dean of Fine Arts (Theatre History)

Bryn Finer Properties Co-ordinator

Fran Gebhard (Acting)

Sandra Guerreiro Audience Services Manager

Linda Hardy (Acting, Voice)

Gordon Hedquist Caretaker

Adrienne Holierhoek

Marketing & Communications Manager

Mary Kerr (Design)

Bindon Kinghorn Theatre Manager

Dr. Allana Lindgren

(Theatre History, On Leave)

Peter McGuire (Directing)

Timothy O'Gorman Technical Director

Charles Procure Head of Scenic Construction

Brian Richmond (Acting, Directing)

Allan Stichbury (Design)

Karla D. Stout Head of Wardrobe

Connie te Kampe Department Secretary

Bert Timmermans Production Manager

Dr. Tony Vickery (Theatre History)

Dr. Jennifer Wise (Theatre History)

Jan Wood (Acting)

Michael Booth, Professor Emeritus

Giles Hogle, Professor Emeritus

Alan Hughes, Professor Emeritus

John Krich, Professor Emeritus

Irene Pieper, Professor Emeritus

Juliana Saxton, Professor Emeritus

Sessional *Instructors*

Leslie Bland

Kerem Çetinel

Nelson Gray

Barbara Hill

Dr. Clayton Jevne

Dr. Monica Prendergast

Graduate *Students*

Haviva Avirom

Kate Bessey

Kathy Bishop

Danette Bouchir

David Christopher

Anne Cirillo

Claire Hill

Lauren Jerke

Yasmine Kandil

Brian Kenney

Jeff Pufahl

Kerra St. John

William Weigler

VOS

MUSICAL.THEATRE.SINCE.1945.



DELIGHTFUL FAMILY ENTERTAINMENT!

Director/Choreographer

Matthew Howe

Music Director

Heather Burns

MCPHERSON PLAYHOUSE

NOV 19 - 28, 2010

NOV. 19, 20, 26 & 27 - 8PM

NOV. 21 & 28 - 2PM

CHARGE BY PHONE

250-381-1021



TED HARRISON: PAINTING PARADISE

A BIOGRAPHY IN WORDS & PICTURES by Katherine Gibson

THE PERFECT GIFT

Collectors Edition signed by Mr. Harrison & Ms. Gibson.

Only 445 copies available

Details at www.tedharrisonbiography.com

To order: 1-800-663-6105 (Victoria: 250-387-6409)

online at www.crownpub.bc.ca

or visit Crown Publications: 563 Superior St., Victoria

Friends of the *Phoenix*

The theatre faculty, staff and students would like to thank the following for their support of the Phoenix Theatre's **2010/11 SEASON**.

PRESENTING SPONSORS

*Industrial Alliance Pacific
Insurance and Financial
Services Inc.*

SEASON COMMUNITY PARTNER

Cadboro Bay Village

SEASON SUPPORT

*Monday Magazine
Pepsi
Times Colonist
Victoria Arts Marketing*

\$500+

*Denis Haughey -
Katherine E. and Murray D.
Edwards Scholarship*

*Nancy Neily -
Katherine E. and Murray D.
Edwards Scholarship*

*Joan Lawrence –
Robert G. Lawrence Theatre
Audio-Visual Fund*

*Thomas Mayne –
Thomas and Elizabeth Mayne
Bursary in Theatre
Doris Pfister*

\$300 - \$499

Mark Yunker and Janet Erasmus

\$150 - \$299

*Anonymous -1
Pat Davey
Ted McDorman
Yolanda Olivotto
Mary Ellen Purkis
Andrew Tugwell*

\$50 - \$149

*Anonymous 9
Age Less Medi
Spas and Salons Inc.
Jean Bain
John S. and Barbara Barton
Henry and Valerie Bauld
Gail and Patrick Boulger
Justin Byers
Scott Campbell
Karen Carter
Diane Cliffe
John Close
Ron Cox and Bev Suzuki*

*Barbara Fields
Joyce Folbigg
Linda Giles
Jose and Eugenia Guerreiro
Shirley Guthrie
David Harris
Joe and Linda Harvey
Allan and Elisabeth Haythorne
Walter and Erna Herden
Samuel Hunter
Gwen Isaacs
Audrey Johnson
John Johnston
Dr. Mary Kennedy
Nancy Kenyon
P.J. Kilner
Heather Kirkham
Erik Lythgoe
Frank McGilly
Lee and Carol Mackenzie
Maria Luisa Macrae
Geoff and Ann Machin
Mrs. Joyce Metson
Scott Metson
John and Peggy Mika
George Murphy
Katy Nelson
Margaret Parker and Frank Lewis
Keith and Susanne Phillips
Elizabeth Redpath
Wayne and Pat Robertson
Colin and Ann Scarfe
Elisabeth Silvester
Mary Jean Smith
Doug Stratton
Ann Strother
Rona Sturrock
Helga Thorson and Nick Karlson
Elizabeth Tumasonis
Howard Valentine*

\$10 - \$49

*Anonymous -17
Sybil R. Alexander
Anne Algard
Jan Allen
Phyllis Allen
John and Ann Baty
Laureen Belland
Mark Bensler
P.M. Bond
Ken Cairns
Carmel and John Calder*

*Laine Canivet
Marguerite Cox
Cam Culham
Betty Dawson
Shirley Doyle
Dorothy Edmonds
Tom and Denise Etele
Elsie Farr
Wayne and Cindy Garner
Barry Glickman
Ian Hill
David Hooper
Peter Justo
Pauline Kenneally
Lois Krause
Marni Lalond
Margery Littley
George McAuley
Maryl and Don McCay
Bill and Mary McColl
Brigitte McDougall
Bill and Theresa McMillan
Ian Mair
Michael and Debra Masson
Trevor Matthews
Shirley Montgomery
Joseph and Mary Nemeth
Diana Nicholson
Heather Nicol
J. Marda Paterson
George Preston
Melanie Quenneville
Paul and Hazel Ramsey
Kaitlyn Regehr
Joan Roszmann
Jordan Roszmann
Jennifer Sandmaier
Susan Schmidt
Lorraine Scott
Stephanie Slater
Frank and Dianne Schroeder
Anathalie Taylor-Lee
R.C. and Judith Terry
Stephanie Ustina
Russ Warren
Norman and Beatrix Wells
Ann J. West
Angela Wintersgill*

*If you wish to be acknowledged
in another manner, please
contact Sandra Guerreiro at
(250) 721 8003.*

Your support is vital to us! Thank you!

great movies. cheap prices. damn fine popcorn.

CINECENTA.COM

STUDENT UNION BUILDING • UNIVERSITY OF VICTORIA

before the play...

Grad House
fresh local

great food at student prices.

Monday to Friday
11:30AM to 9:00PM

Halpern Centre
for Graduate Students,
UVIC

<http://gss.uvic.ca/gradhouse.htm>
(closed for reading week)

LANGHAM COURT Theatre

presents

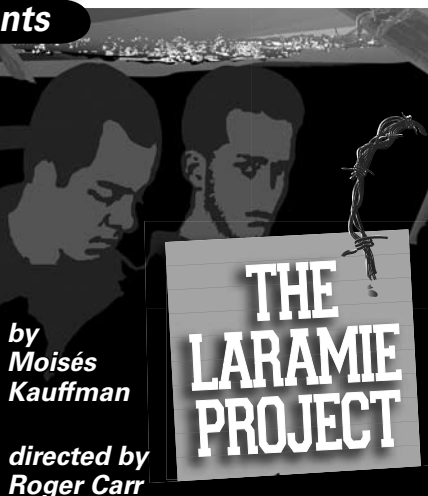
THE MEMORY OF WATER

by
*Shelagh
Stephenson*

directed by
Angela Henry



Nov. 17 - Dec. 4, 2010



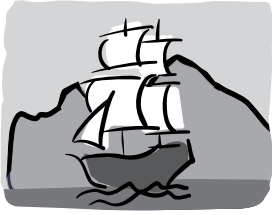
by
*Moisés
Kauffman*

directed by
Roger Carr

THE LARAMIE PROJECT

Jan 12 - 29, 2011

Box Office at 250-384-2142 • www.langhamcourttheatre.bc.ca



Cadboro Bay
VILLAGE BIA



Your one-stop neighbourhood location for friendly service and all your life's needs.

PROUD TO SUPPORT
the Phoenix Theatre and our theatre artists of tomorrow!



10% student discount everyday



10% Student Discount Everyday
Fast Home Delivery



Smugglers Cove Pub
& Liquor Store

CADBORO BAY
BOOK COMPANY
www.cadborobaybooks.com

PEOPLE'S
COMPOUNDING PHARMACY
Plus! Medicine Centre Pharmacy in the SUB

Just minutes from UVic, Cadboro Bay Village has everything for your busy life: from this evening's dinner supplies and accompanying bottle of merlot to all your health care needs. Come by, pick up a good book and relax over a hot latté. It's all here at your friendly one-stop neighbourhood shops!

www.cadborobayvillage.com