

PHOENIX



October  
10 - 26  
2002

INVALID

THE IMAGINARY



University  
of Victoria

CH



VICTORIA  
**DANCE  
SERIES**

[www.VictoriaDanceSeries.com](http://www.VictoriaDanceSeries.com)

**LOLA DANCE  
VOLIO**

IMPULSE BALANCE STRENGTH

*"Remarkable  
choreographic  
brilliance. The touch  
of a master."*

— Vancouver Sun

**NOVEMBER 8 + 9**

FRIDAY + SATURDAY • 8PM

McPHERSON PLAYHOUSE

**McPHERSON BOX**

**OFFICE: 386-6121**

[www.loladance.org](http://www.loladance.org)

**DON'T MISS A MOMENT!**

**4 Show Subscriptions** including LOLA Dance,  
Royal Winnipeg Ballet, La La La Human Steps  
and Les Grands Ballets Canadiens de Montreal  
available **from as low as \$90.40**

TIMES COLONIST 

**FASTRAK**  
concrete wall services

**350  
MAYFAIR**

  
VICTORIA  
FOUNDATION

# The Imaginary Invalid

Adapted by Milles Malleson

## The Creative Team

Director	<b>Roy Surette</b>
Scenic Designer	<b>Allan Stichbury</b>
Lighting Designer	<b>William Mackwood</b>
Costume Designer	<b>Erin Macklem</b>
Mask Designer	<b>Melody Anderson</b>
Stage Manager	<b>Rena McLeod</b>
Assistant Director	<b>Britt Small</b>
Assistant Costume Designer	<b>Lindsay Hill</b>
Musical Composers	<b>Alexander Ferguson &amp; Mitch Pollock</b>

## The Cast

<b>Tom Middleditch</b>	Argan
<b>Kate Humble</b>	Beline
<b>Katie Siney</b>	Toinette
<b>Kate Braidwood</b>	Louise
<b>Alexander Ferguson</b>	Fleurant (Apothecary), Bonnefoy
<b>Mitch Pollock</b>	Cleante
<b>Jeff Stubbs</b>	Dr. Diafores
<b>Douglas Scott Bates</b>	Thomas Diafores
<b>Ashley Adamson</b>	Angelica
<b>David Ward</b>	Beralde
<b>Nick Green</b>	Dr. Purgon

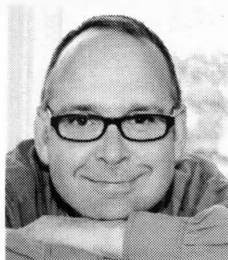
There will be one 15 minute intermission.

**Act I** The sitting room of Monsieur Argan's house in Paris

**Act II** The same, A little later

Produced by Special Arrangement with Samuel French Inc.

## Roy Surette *Director*



Roy is commencing his 6th season as Artistic Director at the beautiful Belfry Theatre in Victoria. Prior to this he was the Artistic Director at Vancouver's Touchstone Theatre for twelve seasons. Roy has had the great pleasure of directing the works of many wonderful Canadian playwrights including Jason Sherman, Judith Thompson, John Murrell, John Lazarus, Michael Healey, Dorothy Dittrich, Sally Clark, David King, Joan MacLeod, Bryden MacDonald and Michael Marc Bouchard. He was director and co-creator of Axis Theatre's international hit ***The Number 14*** and the Belfry Theatre's world premiere of

***Ingenious Speculations: Inspirations from Leonardo***. Recently Roy directed ***Flying Blind*** an acrobatic collective creation which will tour to Australia following its Canadian remount in the Spring of 2003. Roy has directed for many of Canada's leading theatre companies including Canadian Stage, The Shaw Festival, Alberta Theatre Projects, The Arts Club, Manitoba Theatre Centre, The Vancouver Playhouse and for many of the scrappy, innovative smaller companies too. Roy had great fun directing ***Doggs Hamlet/Cahoots Macbeth*** for The Phoenix Theatre in 1998.

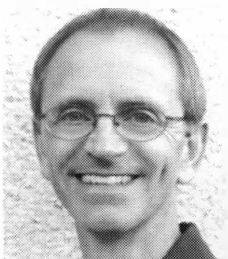
## Allan Stichbury *Scenic Designer*



Allan Stichbury has designed for theatres all across Canada including Stratford and Shaw. For Opera he has designed at the Edmonton, Calgary and Manitoba Operas and the Banff Centre. He has also designed on Broadway, lighting for ***Mr. Lincoln*** at the Morosco Theatre. Allan has taught at the University of Victoria since 1988.

Most recent designs include set and costumes for Alberta Theatre Project's ***The Beauty Queen of Leenane***, set and lighting for The Shaw Festival's ***The Mystery of Edwin Drood***, ***Three Tall Women*** at the Manitoba Centre and ***A Christmas Carol*** for Theatre New Brunswick. For the Phoenix, recent designs were for ***Endgame***, ***The Seagull*** and ***Frogs***. He exhibited at the 1995 and 1999 Prague Quadriennial. Allan is past president of Associated Designers of Canada.

## William Mackwood *Lighting Designer*



William Mackwood graduated from the University of Victoria's theatre program with a specialization in Directing, and a focus on Drama-in-Education. For the past three years, he has spent his summers writing, directing, and designing for the McLean Mill National Historic Site's interpretive theatre program. During the winter months, he designs sets and lights for the Victoria Conservatory of Music's Opera Studio program. Currently, he is working towards a Masters degree in Lighting Design at the University of Victoria. William loves all things theatre related.

VICTORIA THEATRE GUILD PRESENTS

Alan Bennett's

# Habeas Corpus

directed by David MacPherson

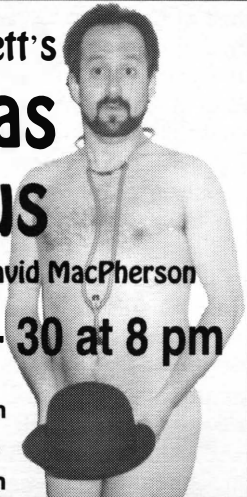
Nov. 14 - 30 at 8 pm

Matinee

Nov. 23 at 2 pm

2 for 1 Preview

Nov. 12 at 8 pm



LANGHAM COURT THEATRE



805 LANGHAM COURT off Rockland Ave.

INFORMATION & CHARGE BY PHONE

384-2142

www.langhamcourttheatre.bc.ca

# CapriCcio

Michael Gormley Director

*Great Music is great music,  
regardless of when it's created.*

CapriCCio is dedicated to singing the finest choral music, from the Renaissance to today's composers.

Our finest concert of the season is on

**Remembrance Day,**

**Nov. 11th at 3 pm**

We'll be performing Vaughn Williams' *Mass in G Minor* & other works, including Britten's *Hymn to St Cecilia*.

The season includes Bach, Handel, Gabrieli, Bruckner, Vaughn Williams, Messaica, Britten, Butterfield and more - with some St. Patrick's Day music thrown in for good measure.

**Come join us!**

**For concert and ticket information  
call (250) 383-6639**



**southisland**  
OPTOMETRY CENTRES

now accepting  
new patients

Dr. Brent Morrison

Dr. Ann-Marie Stewart

Dr. Christopher Snow

- Eye Health • Glasses • Contacts
- Laser Consultation • Ortho K Therapy

**477-4711**

3994 Shelbourne St.  
(by the new Tim Hortons)

**478-6811**

202-1910 Sooke Rd.  
(at Colwood Corners)



## Melody Anderson *Maskmaker/Designer*



Melody Anderson studied at Camosun College, The Victoria College of Art and Emily Carr College of Art and Design. She began working in theatre for the Caravan Stage Company (now the Caravan Farm Theatre) in Armstrong, B. C. in 1978. Since then, her masks have been featured in numerous Caravan productions including *The Caucasian Chalk Circle*, *Horseplay*, *Law of the Land*, *The Coyotes*, *The Mystery Cycle* and *The Ballad of Weedy Peetstraw*. Most recently she has worked as a designer for Runaway Moon's production of *The Faerie Play* and the Belfry/Axis Arts Club/Legs on the Wall production of *Flying Blind*. She has received Jessie Richardson Awards for Vancouver theatre for her design work on *The Number 14* for Axis Theatre, *The Beauty Machine* and *Peacemaker* for Green Thumb Theatre, and Cultural Metaphors for Panagea Arts Society. Other mask credits include *Hamlet*, *Alice* and *The Visit* for Arts Club Theatre, *Septet* for the Kiss Project, *A Perfect Ganesh* for the Belfry Theatre and *Big Shoes* for Yorick Theatre. In addition to their use in stage productions, her masks are used as teaching tools in acting workshops throughout North America. She lives in Vancouver with her husband, actor/playwright/mask performer Peter Anderson.

## Rena McLeod *Stage Manager*



Rena is in her final year at the Phoenix. She spent her summer Stage Managing the *United Nations Children's Conference on the Environment* and the *Victoria FolkFest*. Past Stage Management credits include *Say Something*, the debut project for Bent Penny Theatre at the Belfry, *Turandot* at the Phoenix as well as *You Can't Take It With You* and *The Misanthrope* at Capilano College. Before college, Rena had the delightful pleasure of working with Shari Lewis and Lambchop on *The Charlie Horse Music Pizza*. Rena is a founding member of Bent Penny Theatre Company.

## Erin Macklem *Costume Designer*



Erin is delighted to be working with Roy Surette, the staff, and cast at her old stomping grounds. A graduate of the University of Victoria's Theatre Department, her work was last seen at the Phoenix in 1998 when she co-designed the set for Lee Blessing's *Eleemosynary* with Allan Stichbury. Since then she has worked as an administrator for Calgary Opera, a graphic designer for the Victoria Independent Film and Video Festival, a stage manager and designer for Viva Musica in Kelowna, and a touring stage manager for Story Theatre in Victoria. Local design credits include *Much Ado About Nothing* for Eclectic

Circus Productions; *Stone and Ashes*, *Aerwacol*, *The End of the World Romance*, *The Black Box*, and *He Said, She Sang* for Theatre SKAM; and *SEX: the Musical* and *The Vinedressers* for The Other Guys Theatre Company. Erin will be designing set and costumes for Theatre Tart's upcoming production of Maureen Hunter's *The Transit of Venus* this winter in Vancouver.

OCTOBER 29 - NOVEMBER 24, 2002

# MARY'S WEDDING

BY STEPHEN MASSICOTTE

A haunting, heartbreaking journey...  
Massicotte is a gifted storyteller  
Calgary Sun



supported by  
BMO Harris Private Banking

focus



TICKETS 385.6815

from \$16 - \$29

1291 Gladstone at Fernwood

## Belfry Theatre

September 20 - November 2

a romantic drama

# The Heiress

by Ruth & Augustus Goetz



based on the novel  
Washington Square  
by Henry James  
CBC radiONE



The Playbill Dining Room  
open before every matinee  
and evening show!

[www.ctheatre.bc.ca](http://www.ctheatre.bc.ca)

The Chemainus  
Theatre Experience

1-800-565-7738

## 1945 - Victoria Operatic Society - 2003

### A Christmas Carol

A Musical of the  
Dickens Classic

Nov. 22 - Dec. 1  
2002

Gilbert & Sullivan's

### The Yeomen of the Guard

May 2 - 11  
2003



2002-2003 Season • McPherson Playhouse

Vouchers are on sale now! Save over Box office prices!

CHARGE BY PHONE - 381-1021





### **TOM MIDDLEDITCH** *Argan*

Tom is currently in his second year as an actor in the Phoenix Theatre Program at UVic. You may remember him as the German insane asylum master, Begriffenfeldt, in last year's **Peer Gynt** or Truffaldino in **Turandot**. This past summer, he worked as a heritage storyteller and played Jacob in David French's **Saltwater Moon**.



### **KATE HUMBLE** *Beline*

Kate recently completed a three month summer run with the **Fort Steele Follies** and living history street theatre. This is her fourth year and sixth show with the Phoenix. Credits include: Troll King in **Peer Gynt**, Tartaglia in **Turandot**, Mayoress in **Two Planks and a Passion**, Chorus Leader in **Frogs** and Wild Mary in **Colours in the Storm**.



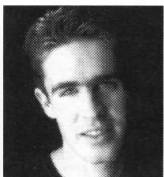
### **KATIE SINEY** *Toinette*

Katie is currently in her fourth year of acting at the Phoenix. Previous credits include **Peer Gynt**, **Turandot** and **Three Comedies** for the Phoenix as well as a S.A.T.C.o. performance of **Sound of Silence**. Other credits include **The Surrogates** which played at the Summer Fringe Festival and Emily Carr, story telling through the Royal B. C. Museum in Victoria.



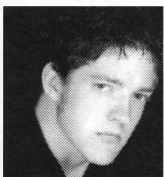
### **KATE BRAIDWOOD** *Louise*

This is Kate's fourth and final year in the acting program at The Phoenix. Previous productions include **Peer Gynt**, **Turandot**, and **Frogs** as well as S.A.T.C.o. productions such as **Alone** and **E.T. the Musical**.



### **ALEXANDER FERGUSON** *Bonnefoy, Fleurant*

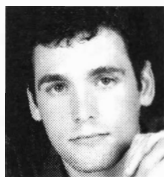
In fourth year acting at UVic, Alexander's mainstage credits at the Phoenix include **Colours in the Storm**, **Frogs**, **Turandot** (for which he also wrote the music and played the keyboards), and **Peer Gynt**. Other favorite credits include **Anne of Green Gables** for the V.O.S., and **Somewhere in the World...** for the Charlottetown Festival in P.E.I.



### **MITCH POLLOCK** *Cleante*

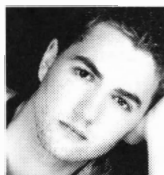
This is Mitch's third year in the acting program at UVic. You may remember him from the Phoenix productions of **Frogs**, **Two Planks and a Passion**, **Turandot** and **Peer Gynt**. He most recently appeared as Cedric Longfellow Esq. in the Kimberly Summer Theatre production of **Fools Gold**. Mitch is also an aspiring songwriter.





**JEFF STUBBS** *Dr. Diafores*

Jeff Stubbs is wrapping up his fourth and final year in acting at UVic. Acting credits include last year's Phoenix productions of **Peer Gynt** as one of the Peers and **Turandot** as Ishmael. He recently appeared as Captain Hollis in a S.A.T.Co./Medd production of **Kaleidoscope** that played at U.C.F.V.



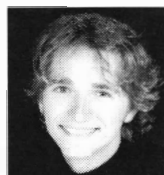
**DOUGLAS SCOTT BATES** *Thomas Diafores*

This is Scott's second year at the Phoenix as a theatre major. This year he has been accepted into the acting program and is making his first appearance on the Phoenix main stage with **The Imaginary Invalid**.



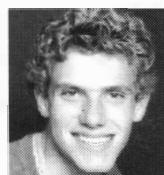
**ASHLEY ADAMSON** *Angelica*

Ashley is in her third year of acting at the Phoenix Theatres. She is very excited to play the role of Angelica in her first mainstage. Previous shows that she looks back upon with fond memory are **Thin Ice**, **Ladies of the Tower** and **The Piper**.



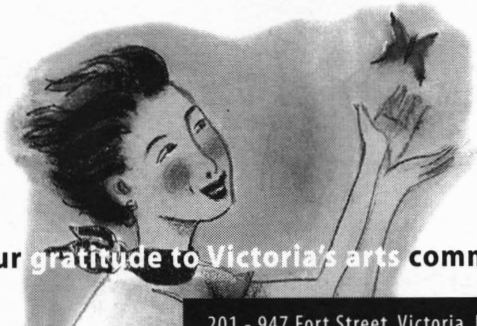

**DAVID WARD** *Beralde*

This is David's second year in the theatre program at UVic and his first role in a mainstage production. Over the summer he was involved with a four member, theatrical/comedy dance group known as ATP that performed in and around Vancouver.



**NICK GREEN** *Dr. Purgon*

Nick is in his second year of the acting program and this is his first mainstage performance. Other Victoria credits include various shows through S.A.T.Co. and **A Tribute to Emily Carr**, performed at the Royal B.C. Museum. In Vancouver, Nick has appeared in two shows with Theatre Under The Stars; Chorus in **South Pacific** and Gremio in **Kiss Me Kate**.

**LabyrinthVictoria**  
 Centre for Dissociation Inc.  
 Marlene E. Hunter  
 M.D., F.C.F.P.(C) | Director

**Our gratitude to Victoria's arts community**

201 - 947 Fort Street, Victoria, BC V8V 3K3 **Tel: (250) 381-4344**

## Molière Playwright

1622-1673

Molière is considered one of the world's greatest writers of comedies. Many of his plays have also been translated for performance in English theatres, giving him a considerable reputation abroad. Molière, whose real name was Jean Baptiste Poquelin, was born in Paris. He studied with the Jesuits at the College de Clermont. In 1643 he embarked on a theatrical venture under the title L'illustre Theatre, which lasted for over three years in Paris. From 1659, no year passed without at least one dramatic achievement. His plays range from simple farce to sophisticated comedy. They ridicule the weakness and foolish actions of the people of his time, and point to their false values.

In *Tartuffe*, Molière invented one of his most famous comic types, the religious hypocrite. The play was so audacious that Louis XIV, although he found the play amusing, did not permit a public performance for five years, fearing it would offend the powerful higher French clergy. Molière died while playing the lead part in his last play, *The Imaginary Invalid*.

VICTORIA *Arts*  
MARKETING

### Programme Advertising, Design and Production

(250) 382-6188 · Publisher: **Philomena Hanson** · Design/Production: **Lyn Quan**

**giggling iguana productions presents**

## THE FALL OF THE HOUSE OF USHER

at Craigdarroch Castle:

**Thursday, Oct. 24 at 8pm**

**Friday, Oct. 25 at 7pm & 9pm**

**Sunday, Oct. 27 at 8pm**

**Wednesday, Oct. 30 at 8pm**

**Thursday, Oct. 31 at 8pm**

**Friday, Nov. 1 at 7pm & 9pm**

\$15 (+ GST) general • \$12 (+ GST) students

Not a seated performance. Craigdarroch Castle has 87 stairs without ramps or elevator.

**Tickets must be purchased in advance.**

**CHARGE BY PHONE: (250) 592-5323**

### Craigdarroch Castle

1050 Joan Crescent • [www.craigdarrochcastle.com](http://www.craigdarrochcastle.com)



INVITE YOU TO...

**COWICHAN COROFEST  
2002 GALA  
CHORAL CONCERT  
8:00 PM SATURDAY  
NOVEMBER 16**



FEATURING

### CHOR LEONI MEN'S CHOIR

*Wildly popular since their debut, CHOR LEONI has consistently placed in the Biennial CBC Radio National Competition for Amateur Choirs, including first in 1994, 2000 and 2002.*

**COWICHAN THEATRE – DUNCAN  
TICKET CENTRE (250) 748-7529**

Advance Tickets – Adults \$15 – Students/Seniors \$12  
Day of Concert – Adults \$20 – Students/Seniors \$15  
Children 12 & under - free

## **Production Team**

Production Manager  
Technical Director  
Assistant Stage Managers  
Lighting Board Operator  
Sound Technician  
Sound Board Operator  
Head of Scenic Construction  
Assistant Scenic Carpenter  
Properties Coordinator  
Prop Assistant  
Mask Assistants  
Scenic Painters  
Head of Wardrobe/Cutter  
Coordinating Wardrobe  
Maintenance Supervisor  
Wardrobe Maintenance Supervisors  
Makeup Advisor  
Hair  
Dressers  
  
Theatre Manager  
Audience Services Manager  
Communications  
Communications Assistants  
Poster Design  
Photography  
Lobby Display  
Front of House Manager  
Box Office

Opening Night Reception

**Bert Timmermans**  
**Steve Vrooman**  
**Christie Little, Emma Claire Miller**  
**Eugene Mendeleev**  
**Brent Burbee**  
**Leslie Stobbart**  
**Todd Skinner**  
**Kyle Sutherland**  
**Bryn Finer**  
**Kathleen McGuinness**  
**Marissa Vest, Melissa Bates**  
**Emma Routledge, Aaron Spouler**  
**Karla D. Stout**

**Kathleen Greenfield**  
**Odessa Bennett, Monica McGarry**  
**Colleen Carpenter**  
**Don Ross**  
**Michael Hall, Paul Le Blanc,**  
**Emily McCartney, Kendra Oliver**  
**Bindon Kinghorn**  
**Sandra Guerrero**  
**Marnie Crowe**  
**Emily Butler, Sarah Hutchison**  
**Malahat Group International**  
**Stewart Wood**  
**Alistair Newton**  
**Leah James**  
**Claire Charland, Alexis King,**  
**Gabrielle Pope, Karen Fisher,**  
**Melissa Bates, Tina Rogers,**  
**Tracy Steinburg,**  
**Heather Woodland,**  
**Rebecca Mulvihill**  
**Carli Posner, Karen Fisher**

*Partners in Performance*

*See the Light*

*Rental & Design Services*

**Croy & Co.**  
**STAGE LIGHTING LTD**

TEL: (250)598-CROY

FAX: (250) 598-2814

The Victoria Gilbert and Sullivan Society

presents:

# The Pirates of Penzance

Nov. 29<sup>th</sup>, 30<sup>th</sup> at 8:00 pm

Dec 1<sup>st</sup> at 2:00 pm

Dec 6<sup>th</sup>, 7<sup>th</sup> at 8:00 pm

at

Charlie White Theatre,  
Sanscha Hall, Sidney

Directed by  
Wendy Merk

Producer  
Margaret Lopatecki

Choreographer  
Carole Adams

Set Design  
Bill Adams



Tickets: \$18 General

\$15 Srs/Students

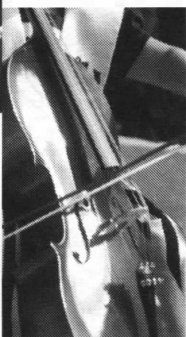
Available at: 656-0275

Mary Winspear Centre@Sanscha  
(Visa and Mastercard)

*Congratulations*



# Phoenix Theatre



thank you  
for your  
contribution  
to Victoria's  
vibrant  
culture.



FLEMING PRINTING Ltd

200 Esquimalt Road, Victoria, BC V9A 3K9

(250) 386-7594 Fax: (250) 382-3931

## Department of *Theatre*

**Brian Richmond**, Chair, Acting, Directing  
**Marnie Crowe**, Communications Officer  
**Barbara Dillon**, Department Secretary  
**Bryn Finer**, Properties Co ordinator  
**Sandra Guerreiro**,

Audience Services Manager

**Linda Hardy**, Acting, Voice

**Kyra Harper**, Acting

**Giles Hogya**, Dean of Fine Arts, Lighting

**Alan Hughes**, Professor Emeritus

**Mary Kerr**, Design

**Bindon Kinghorn**, Theatre Manager

**John Krich**, Professor Emeritus

**Scott Malcolm**, Acting, Movement

**Peter McGuire**, Acting, Directing

**Harvey M. Miller**, Professor Emeritus

**Charles Procure**,

Head of Scenic Construction (on leave)

**Juliana Saxton**, Professor Emeritus

**Todd Skinner**,

Acting Head of Scenic Construction

**Allan Stichbury**, Design

**Karla D. Stout**, Head of Wardrobe

**Bert Timmermans**, Production Manager

**Tony Vickery**, Theatre History

**Steve Vrooman**, Technical Director

**Jennifer Wise**, Theatre History (on leave)

**Jan Wood**, Acting

## Graduate *Students*

**Pornpan Arayaveerasid**

**Colleen Carpenter**

**Cam Culham**

**David Ferry**

**Brian Finn**

**Kate Jamin**

**William Mackwood**

**Britt Small**

**Monica Prendergast**

**Randy Poulis**

**Janice Ward**

# Phoenix *Phacts*

**This Past Summer . . . . Jason Mitchell** and **Sara Topham** were both featured in multiple roles at the Stratford Festival. **Allison Latimer** was Production Assistant and **Andrew McCaw** Assistant Lighting Designer. **Dennis Garnhum** directed Timothy Findley's last completed play **Shadows** - **Ereca Hassell** designed the Lighting and **Andrew McCaw** was Assistant Lighting Designer. **Mercedes Dunphy** of Tart Theatre performed at the Victoria Fringe Festival along with our own monologist **T.J. Dawe** in his latest show, Jack London's **Tracks**. Our Spotlight on Alumni's T. J. won the award for best actor in the Victoria Fringe. Watch for him in January 2003 in **Slip-Knot** for the Phoenix. Back this year at the Phoenix to do her MFA in Directing is **Britt Small**. This summer she directed **Paul Terry** in **The Ugly Duchess** (written by **Janet Munsil**). Paul won Best of Venue in Winnipeg for his performance and appeared in Langham Court's **The Mousetrap**. Britt also directed **Lingua** for the Victoria Fringe Festival, featuring, among others, **Treena Stubel**. Presenting papers at the Association for Canadian Theatre Research Conference, held at the University of Toronto this past May were graduate students **Cam Culham**, **Kate Jamin** and **Monica Prendergast**. **Dr. Tony Vickery** also presented. Once again Banff was a popular working spot for Phoenix students. **Emma Routledge** was an assistant stage manager on the Festival Dance 2000. **Kelly Lunn** was assistant stage manager for **Opera As Theatre**. **Zachary Stevenson** played in **Sweeney Todd** at the Great Canadian Theatre Company in Ottawa. Treading the boards for Kimberley Summer Theatre this past summer was **Mitch Pollock** and **Michael Copley**. Both performed in the musical **Fools Gold** as well as the vaudeville show. **Leslie Stobbart** was project co ordinator for entertainment for Butchart Gardens. **Nick Green** played Gremio in **Kiss Me Kate** for Theatre Under the Stars in Vancouver. **Tom Middleditch** took to the Kootenays this past summer to perform in a heritage storytelling theatre. He also played Jacob in David French's **Saltwater Moon** on the lawn of a historic house in Nelson. **Giles Hoya** designed the set and lighting for **Henry V** for New York's Jean Cocteau Repertory Theatre. The Victoria Shakespeare Festival featured **Alexander Ferguson**, **Jay Hindle**, **Elicia Cronin** and **Al Newton** in **The Merchant of Venice**, **Julie Moss** was board operator/crew. **Brian Richmond** directed **Small Returns** by Jacob Richmond in Montreal. **Mary Kerr's** television series **Toy Castle** for P.B.S was filmed during the summer. Over at the Belfry Theatre, **Celine Stubel** was in **Garage Sale**. Also at The Belfry, **Jennifer Swan** is the new Stage Manager, **Keith Houghton** the Production Technician and **Rebekah Johnson** will be designing the lighting for Belfry's **Proof** directed by our own **Brian Richmond**. **Paul Fauteux** has been accepted into the Stratford Festival for Classical Theatre Training. **Lani Milstein** is currently with the West Coast Symphony in Vancouver. **Pamela Bethell** is the new assistant stage manager for Pacific Opera Victoria, replacing **Jackie Adamthwaite** who has moved to Vancouver to try her hand at acting. **Brendan Keith** is the new Assistant Technical Director of the Royal and McPherson Theatres.

## Acknowledgements

*The Phoenix Theatres would like to acknowledge the following for their assistance and generosity:*

The Times Colonist, Monday Magazine, The News Group, Where Magazine, CH Television, The New VI, The Daily, Shaw Television, CBC Victoria, CFUV Radio, The Ring, The Martlet, The Nexus, Arts and Entertainment Magazine, Matthew Takoski of the Victoria Dining Guide.

**Very special thanks to:** The Vancouver Playhouse, Victoria Theatre Guild (Langham Court), The Belfry Theatre, Melissa Bates and The Times Colonist for the script donations.

# Friends of the *Phoenix*

The theatre faculty, staff and students would like to thank the following for their support of the Phoenix Theatre's 2002/2003 Season.

## SPONSORS

Ron Conway  
Lawrence Eastick  
Joan Lawrence  
Malahat Group International  
Hilda A. Murray  
Lewis & Kay Smith

Reg & Wendy Mitchell  
Lloyd & Lois Newsham  
Lisa M. Richdale  
Ron & Mary Schaufele  
Dr. & Mrs. G.W. Selleck  
Sheila Sheldon Collyer  
Nelson & Karen Smith  
Inez St. Dennis  
E. Ann Strother  
Mr. Vincent Tiloshanec  
Ms Cicely Thomson  
Mr. & Mrs. Gordon  
& Dea Wallace  
Diana & Joseph Wolf  
Anne & Conna Wood

Mr. & Mrs. Gaskill  
Frank & Linda Gower  
Dr. Barbara Harris  
Walter & Erna Herden  
Ian Hill  
Beverly Holmes  
Sam Hunter  
Dr. & Mrs. H. Hyde  
Anthony R. James  
Pauline Kenneally  
& Roger Sandford  
Mr. & Mrs. D. McCay  
Mr. & Mrs. Robert Mais  
Daphne K. Morgan  
Mr. & Mrs. Joe & Mary Nemeth  
Mr. & Mrs. A. P. Newell  
Miss Elizabeth Redpath  
Peter Sanderson  
& Linda Burbidge  
B. Lewis Seens  
Stephanie Slater  
John E. Smart  
Linda Sproule-Jones  
Mrs. Freda Woodworth

## CONTRIBUTORS

Leonore Alers  
Mrs. Jean Bain  
R.G. Berry  
Linda Calver  
Don & Elaine Curling  
Mrs. Pat Davey  
Joe Dorscher  
Bill & Donna Finlay  
Gwen & David Gaddes  
Mieczyslawa Gawlak  
Jose & Eugenia Guerreiro  
Jean Guthrie  
Floyd Hall  
Joe & Linda Harvey  
Allan & Elisabeth Haythorne  
Jocelyn Hocking  
Horst & Deborah Huelscher  
Don & Kathleen Hyde  
Lionel Johnson  
Lynn & Dennis Kershaw  
P.J. Kilner  
George Kyle  
Elsie Lythgoe  
Maria Luisa Macrae  
Lee & Carol Mackenzie  
Bruce & Nikki McKenzie  
Joyce & Scott Metson

## DONORS

Mrs. Phyllis Allen  
Mrs. Sybil Alexander  
May Allison  
G.W. Atkinson  
Mr. & Mrs. David & Mary Barlow  
Andrew & Mary Baracos  
Dr. & Mrs. A.H. Batten  
Henry and Valerie Bauld  
Robert & Queenie Benson  
Don & Violet Berringer  
P. M. Bond  
Gisela Bradatsch  
Hamish & Sheila Bridgman  
Mrs. C. A. Browning  
Laine Canivet  
Mr. John Close  
Mr. & Mrs. J.F. Defayette  
Mr. & Mrs. Peter  
& Patricia Elcoate

Plus all those Donors, Contributors, and Sponsors who wish to remain anonymous.

April 1 - September 17, 2002

If you are on this list and do not wish to be acknowledged, or, would like to be acknowledged in another manner, please contact Sandra Guerreiro at 721 8003.

CLIP AND MAIL

If you would like to make a donation to the Department of Theatre please mail your cheque to the Theatre Manager, Department of Theatre, University of Victoria, Box 1700, Victoria B.C. V8W 2Y2.  
Tax Receipts are issued automatically for all donations over \$25.

Donor (\$5 - \$49).....Contributor (\$50 - \$299).....

Sponsor (\$300 - \$499).....Benefactors (\$500 - )

Enclosed is my cheque, made payable to The University of Victoria.

I/We would like to be acknowledged in your programs as follows:

NAME \_\_\_\_\_

ADDRESS \_\_\_\_\_

POSTAL CODE \_\_\_\_\_ TELEPHONE \_\_\_\_\_

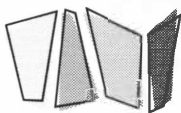
Many companies will match gifts made by employees. Please consult your firm's Personnel or Corporate Relations office and attach a Matching Gift form from your employer, if applicable.  
Thank you.

THE ARTS CLUB THEATRE COMPANY ON TOUR - BILL MILLERD ARTISTIC MANAGING DIRECTOR

Is this the man she was waiting for...or the man who was waiting for her?

# dial M for murder

By Frederick Knott



The Royal & McPherson  
Theatrical Society

"The tension is drawn so tightly that one can almost feel it in the throat" - New York Times

**November 1, 8 pm & November 2, 2 & 8 pm**

McPherson Playhouse Box Office 386-6121

Media Sponsor

**TIMES-COURIER**

# Travel Programs

from UVic's Continuing Studies

**Discover the World with our 2003 Tours.** Our tours provide a safe, comprehensive way to explore fascinating sites around the world with a small group of fellow travellers.

Our academic tour leaders plan your itinerary carefully and share their knowledge of and enthusiasm for the destination and the topic. As well, your travel study begins with an orientation course. There are no prerequisites and the tuition portion of your fee is tax deductible.

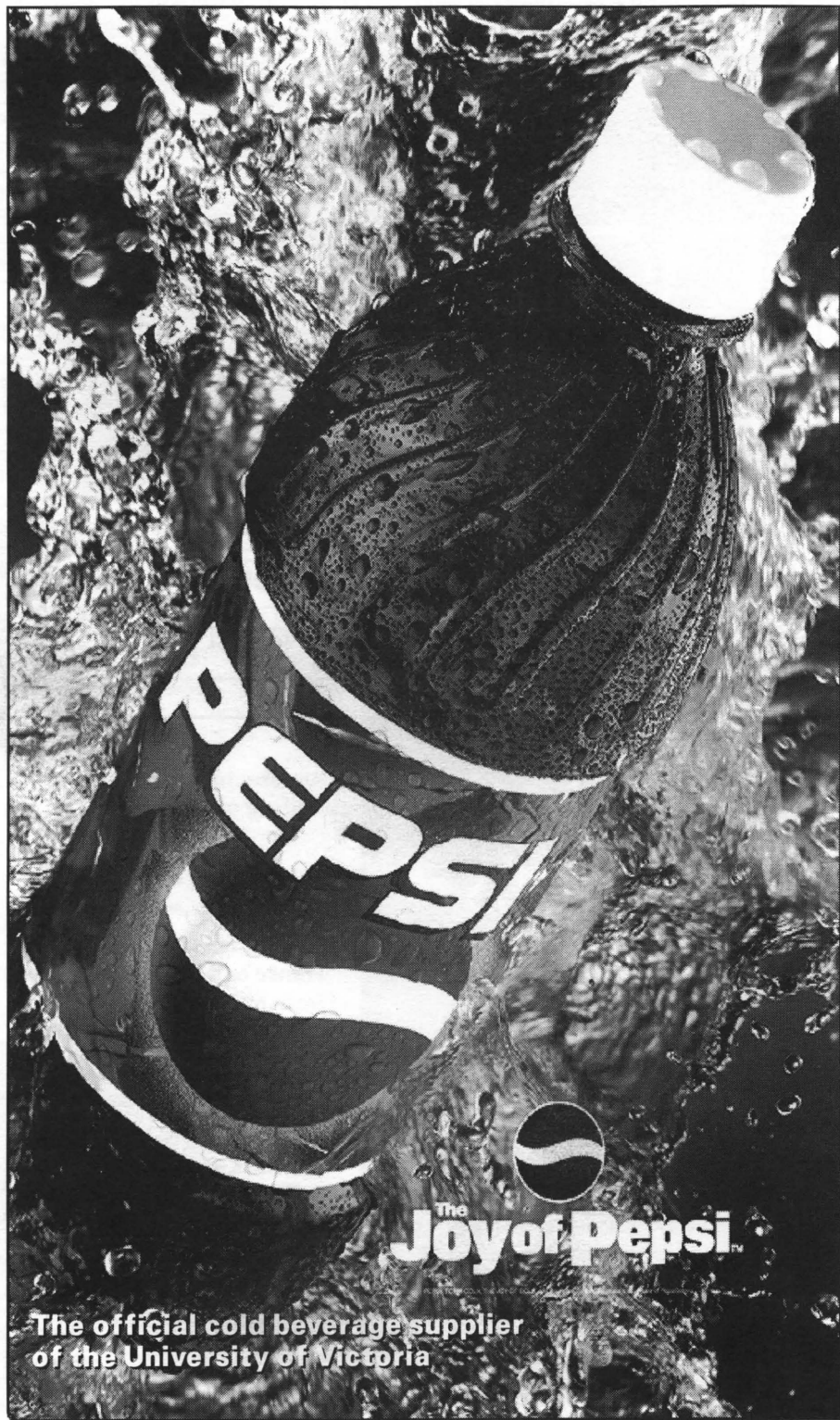


**University of Victoria**  
Division of Continuing Studies

- **Architecture, History, and Culture of Chicago** with Dr. Chris Thomas, April 24–May 2
- **Cuba: History and Culture** with Ms. Silvia Colás-Cardona, May 4–19
- **The Romans in Southern France and Spain** with Dr. Peter Smith, May 26–June 16, with optional 3-night extension in Paris
- **Arts and Culture of Germany** with Dr. Johannes Maczewski, Sept. 25–Oct. 14
- **Central Canada's Palette: A Fine Arts Tour** with Lydia Kasianchuk, September, dates TBA

For more information and to have tour brochures mailed to you, phone (250) 721-8827 or e-mail [jking@uvcs.uvic.ca](mailto:jking@uvcs.uvic.ca).





PEPSI



The  
**Joy of Pepsi™**

The official cold beverage supplier  
of the University of Victoria